

REPORT NO.  
LG2601107301

ISSUE DATE  
February 9, 2026



[Show Interactive Report](#)

DETAILS

Color Grade	D
Clarity Grade	VVS2
Carat Weight	1.01 ct
Shape and Cutting Style	Pear
Description	Lab Grown Diamond
Polish	Very Good

Symmetry	Excellent
Fluorescence	None
Measurement	8.75 x 5.65 x 3.43 mm
Country of Origin	India
Lab Growth Method	HPHT

Your Diamond Grading Explained

YOUR COLOR GRADE

D

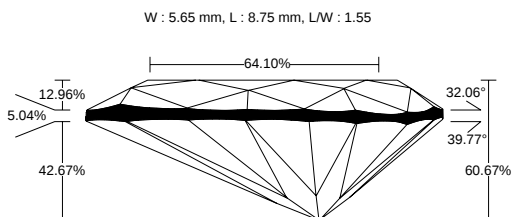
Colourless D E F	Near Colourless G H I J	Faint Yellow K L M	Very Light N OP QR	Light Yellow ST UV WX YZ
---------------------	----------------------------	-----------------------	-----------------------	-----------------------------

YOUR CLARITY GRADE

VVS2

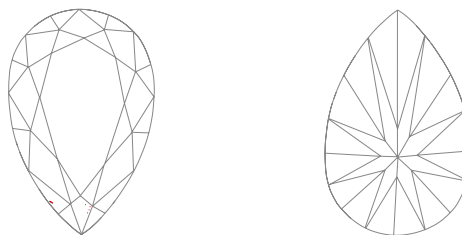
Internally Flawless F IF	Very Very Slightly Included VVS1 VVS2	Very Slightly Included VS1 VS2	Slightly Included SI1 SI2	Included I1 I2 I3
-----------------------------	--	-----------------------------------	------------------------------	----------------------

MEASUREMENTS



8.75 x 5.65 x 3.43 mm

CLARITY PLOT



VVS2

Girdle: Slightly Thick To Thick (Faceted)

Culet: None

Key to symbols

- Needle
- Pinpoint

INSCRIPTION

WISE LG2601107301

Comments

DISCLAIMER

This Certificate provides an opinion by The Provider and should not be relied upon as a guarantee, representation, warranty or appraisal of, or relied upon as the basis of your decision to purchase and/or sell, the goods referred to therein. Images are derived from scan data and are representational only. Visual differences, including facet appearance or surface details, may occur and do not constitute a defect or inaccuracy. This Certificate is based on supplier declarations, and techniques and equipment available at the time of examination of the goods by The Provider and/or third-party laboratories. This Certificate is subject to the T&Cs, available at: [www.wisecertificates.com](http://www.wisecertificates.com). Only the persons that we send this Certificate to may, subject to those T&Cs, make a claim relating to it (but the limitations included in our T&Cs apply to every person reading or receiving this Certificate).

