

REPORT NO.
LG2601870986

ISSUE DATE
January 31, 2026



[Show Interactive Report](#)

DETAILS

Color Grade	E
Clarity Grade	VS1
Carat Weight	2.02 ct
Shape and Cutting Style	Oval
Description	Lab Grown Diamond
Polish	Excellent

Symmetry	Excellent
Fluorescence	None
Measurement	10.24 x 7.15 x 4.36 mm
Country of Origin	India
Lab Growth Method	CVD

Your Diamond Grading Explained

YOUR COLOR GRADE

E

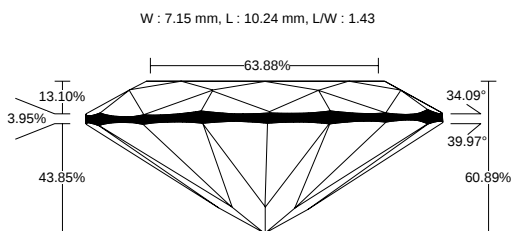
Colourless D E F	Near Colourless G H I J	Faint Yellow K L M	Very Light N OP QR	Light Yellow ST UV WX YZ
---------------------	----------------------------	-----------------------	-----------------------	-----------------------------

YOUR CLARITY GRADE

VS1

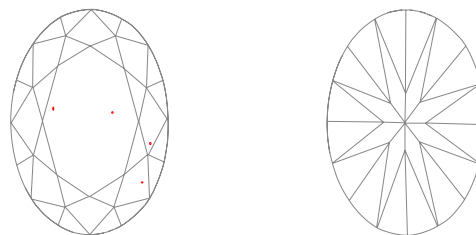
Internally Flawless F IF	Very Very Slightly Included VVS1 VVS2	Very Slightly Included VS1 VS2	Slightly Included SI1 SI2	Included I1 I2 I3
-----------------------------	--	-----------------------------------	------------------------------	----------------------

MEASUREMENTS



10.24 x 7.15 x 4.36 mm

CLARITY PLOT



VS1

Girdle: Medium (Faceted)

Culet: None

Key to symbols

Crystal

INSCRIPTION

WISE LG2601870986

Comments

DISCLAIMER

This Certificate provides an opinion by The Provider and should not be relied upon as a guarantee, representation, warranty or appraisal of, or relied upon as the basis of your decision to purchase and/or sell, the goods referred to therein. Images are derived from scan data and are representational only. Visual differences, including facet appearance or surface details, may occur and do not constitute a defect or inaccuracy. This Certificate is based on supplier declarations, and techniques and equipment available at the time of examination of the goods by The Provider and/or third-party laboratories. This Certificate is subject to the T&Cs, available at: www.wisecertificates.com. Only the persons that we send this Certificate to may, subject to those T&Cs, make a claim relating to it (but the limitations included in our T&Cs apply to every person reading or receiving this Certificate).

